

Datamate L-Tek for PIHR Hi-Rel Connectors

Robust 2mm Pitch Connectors ready for Pin-in-Hole Reflow

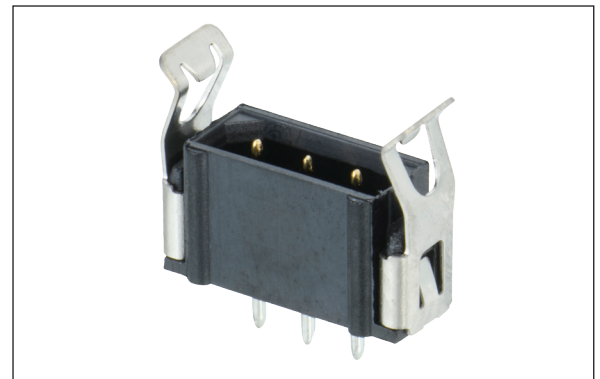
High-reliability performance combined with volume assembly methods. Ensure continuous signal integrity under vibration and shock conditions, with locking latches for fast strain relief. Ideal for pin-in-paste (PIP) or pin-in-hole reflow (PIHR) soldering methods.

Vertical male connectors in single row, with 2mm terminations plated with 100% tin over nickel. Supplied ready for automated board assembly in tape and reel and fitted with pick and place caps. Compatible with all Datamate L-Tek female connectors (cable and PCB mount).

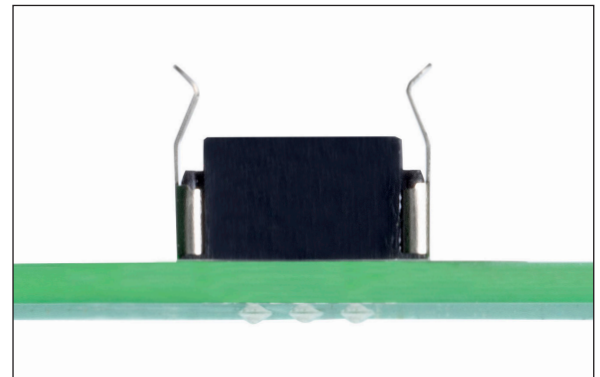
Have confidence in mating and connection protection with fully shrouded and polarized housings. Stocked and ready for your extreme environment applications.



2-contact male connector with latches



3-contact male connector with latches



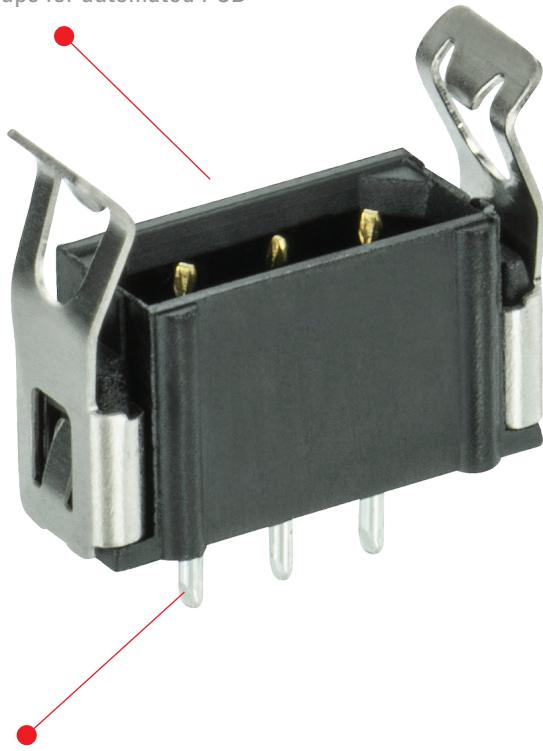
PIHR soldered to 1.6mm PCB

Features and Benefits	
3A per signal contact (all electrically loaded; 3.3A per individual contact) at 2mm pitch	Capable of signal and low power within a compact design, saving PCB real estate
Compatible with existing female Datamate connectors featuring the 4-finger contact design	Maintains electrical continuity through high vibration and shock environments
Shorter termination length at 2mm	Design optimized for throughboard reflow techniques (PIP, PIHR)
Tape and reel packaging with pick and place	Ideal for high volume automated assembly
Withstands -55°C to +125°C temperature range	Rugged and durable connector design for extreme environments
Polarized and shrouded	Eliminate mis-mating and accidental damage to contacts
World-class quality from the Original Designers of Datamate	Published test reports, proven track record, high quality requirements through the complete production cycle

Key Applications	
Aerospace, Defense & Security	Radar, avionics controls, guidance systems, UAVs, radio communications, radar and tracking, vehicle electronics
Motorsport	Sensors and telemetry, navigation, ERS controls
Space	Satellites & CubeSats, communications, launch systems
Energy	Oil & Gas, renewable energy equipment
High-end professional electronics	Robotics, automation, drives & controls, encoders and sensors
Medical	Diagnostics, instrumentation

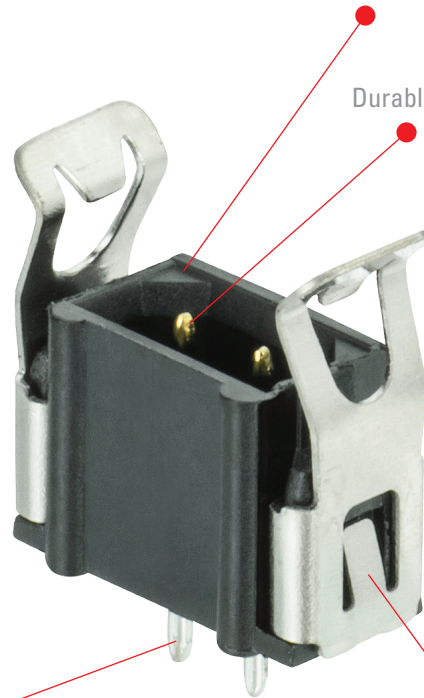
Product Features

Supplied fitted with removable pick and place caps for automated PCB placement



Shorter 2mm terminations suitable for throughboard reflow (PIP, PIHR)

Polarizing features to eliminate incorrect mating



Durable gold plated contact area

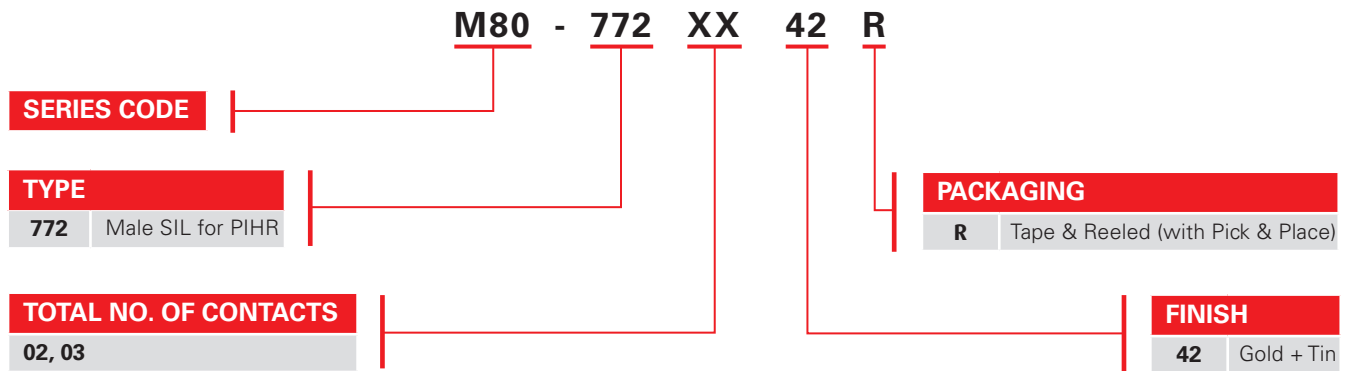
100% tin over nickel for optimal solder compatibility

Compact and fast-mating locking latches

Specifications

Electrical		Mechanical		Physical	
Current rating	3.3A max individual, 3A max all contacts	Number of Mating Cycles	500	Housing	Glass filled PPS, UL94V-0
Voltage rating	800V AC/DC	Temperature range	-55°C to +125°C	Contacts	Copper alloy, selective gold/tin plating
Maximum Voltage	1200V AC/DC	Vibration	10G, 6 hours total	Latches	Beryllium Copper, nickel plating
Insulation Resistance	100MΩ min	Shock	100G	Packaging	Tape & Reel with pick & place cap

How to Order



Compatible Connectors

Cable Connectors:

M80-798XXXX = Female Cable Connector, suitable for 28-32 AWG

M80-898XXXX = Female Cable Connector, suitable for 24-28 AWG

M80-899XXXX = Female Cable Connector, suitable for 22 AWG

Board Connectors:

M80-840XXXX = Female PCB Connector, with 3mm terminations

M80-790XXXX = Female PCB Connector, with 4.5mm terminations

Tooling

Separator Tool: Z80-299



Evenly deflects the latches outwards, to aid easy removal of the mating female connector



Harwin Europe (Global Headquarters)

Portsmouth, Hampshire, UK

E: mis@harwin.co.uk

T: +44 (0)23 9231 4545

Harwin Inc (Americas)

Salem, New Hampshire, USA

E: mis@harwin.com

T: +1 603 893 5376

Harwin Asia Pte Ltd (Asia, Australasia)

Singapore

E: mis@harwinasia.com

T: +65 6 779 4909